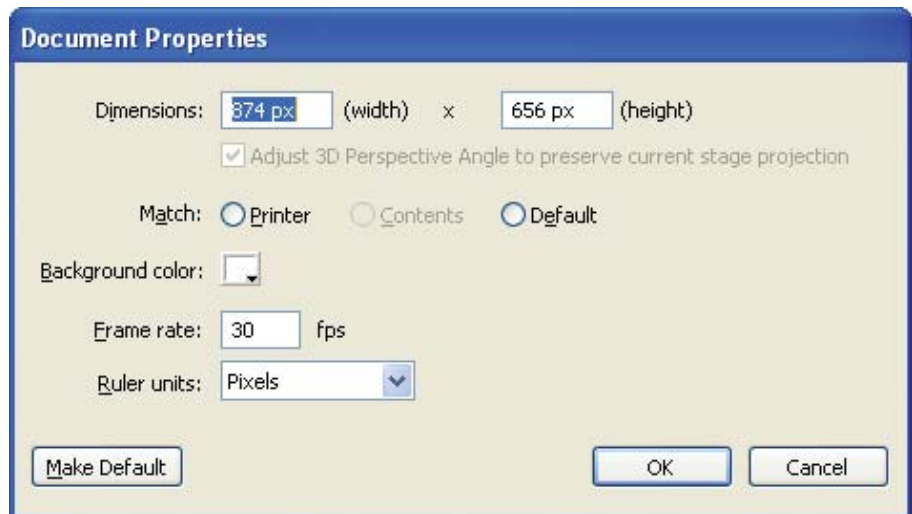


DISPLAY READY REQUIREMENTS:

The instructions below explain how to properly prepare content for display on the eDean network. The instructions assume the reader has a basic knowledge of Adobe Flash and how to publish movies in .swf file format. The final format for any material displayed on the eDean network is .swf. The below instructions and image screenshots were created using Adobe Flash CS4, but earlier versions of Flash will work as well.

Document Setup

- Document size is 874 x 656
- 30 frames per second
- ActionScript 2.0



Sponsor Region



ELECTRONIC DIGITAL MEDIA

813.888.8796

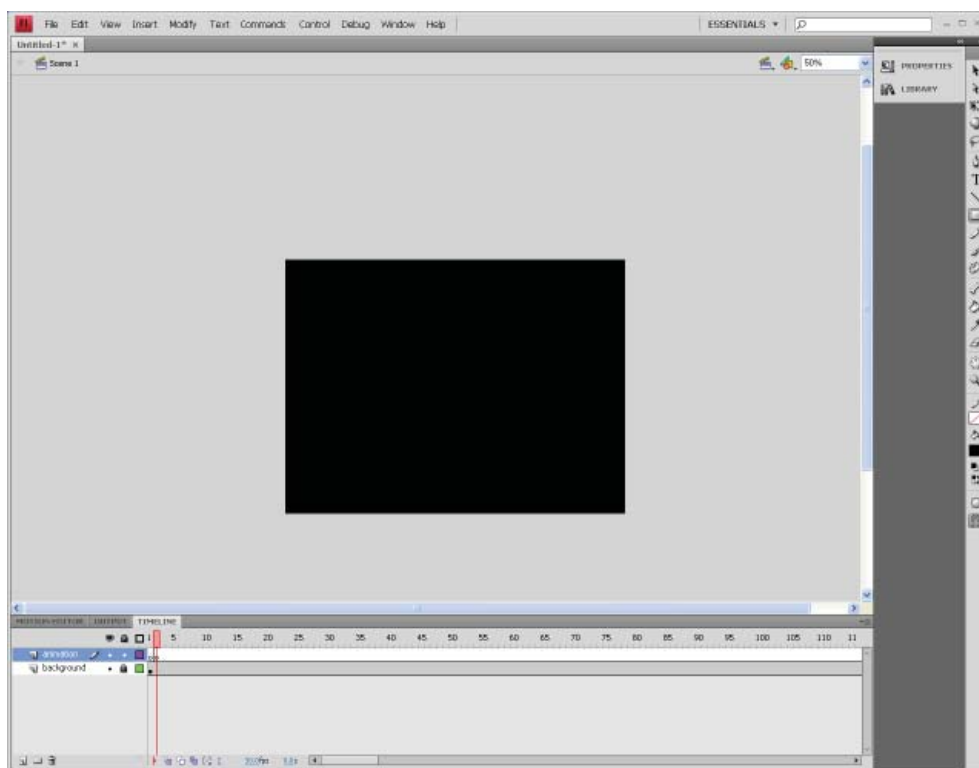
WWW.ELECTRONICDIGITALMEDIA.COM



Emergency Notification

Movie Setup

- Solid color background layer is required for all movies to ensure proper display on networks. The background color layer must start on frame 1 and continue until the end of the movie. Do not place anything else on this layer.
- All other animations should begin on frame 2.
- Place a stop action on the last frame of your movie.



Sponsor Region



ELECTRONIC DIGITAL MEDIA

813.888.8796

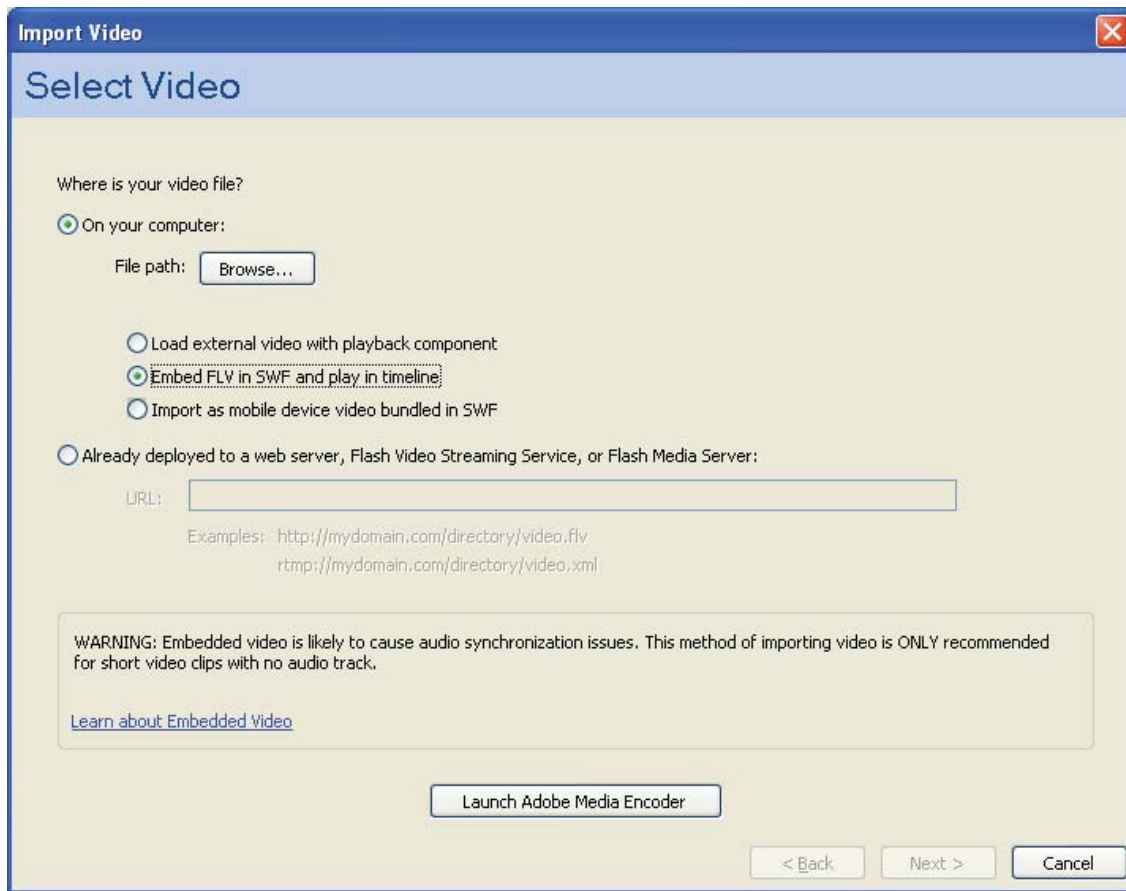
WWW.ELECTRONICDIGITALMEDIA.COM



Emergency Notification

If Embedding Video:

- Videos should be imported using the “Embed FLV in SWF and play in timeline” option. If your video is not in FLV format, you will need to launch the media encoder (at the bottom of the window) to convert it. Note: The eDean network does not include audio, so audio should not be included in your FLV file.



Sponsor Region



ELECTRONIC DIGITAL MEDIA

813.888.8796

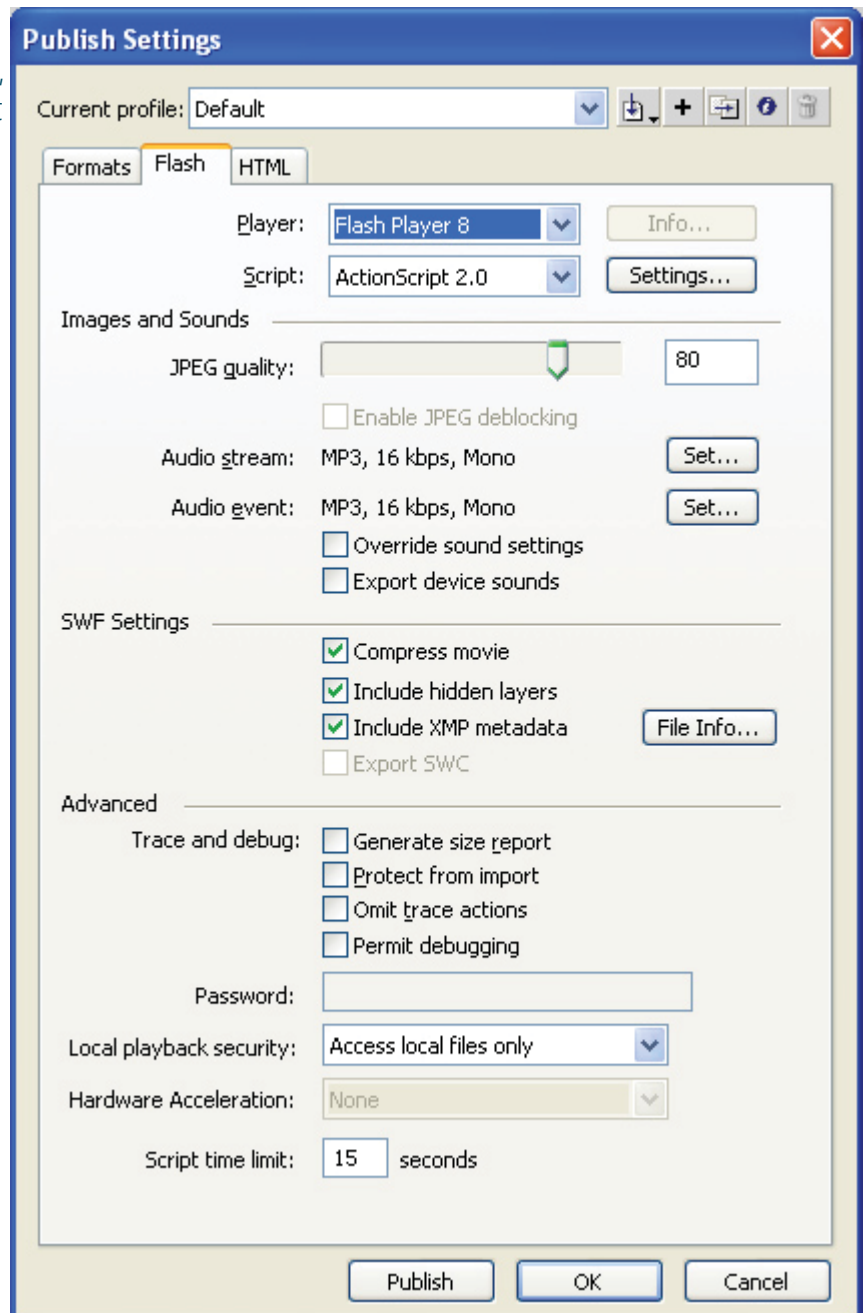
WWW.ELECTRONICDIGITALMEDIA.COM



Emergency Notification

Publish Settings:

- Player should be set to Flash player 8, The eDean network does not support later versions of Flash player at this time.
- Script should be set to ActionScript 2.0
- All other settings are standard
- Publish .swf file



Sponsor Region



ELECTRONIC DIGITAL MEDIA
813.888.8796
WWW.ELECTRONICDIGITALMEDIA.COM



Emergency Notification